

# PRODUCT INFORMATION PACKET



Model No: C447T17WB1A

Catalog No: 194193.00

..200HP..1800RPM.447T.TEFC.460V.3PH.60HZ.CONT.40C.1.15 S.F..RIGID BASE.....AGGREGATE  
DUTY.....

Aggregate Duty



Regal and Leeson are trademarks of Regal Beloit Corporation or one of its affiliated companies.

©2018 Regal Beloit Corporation, All Rights Reserved. MC017097E



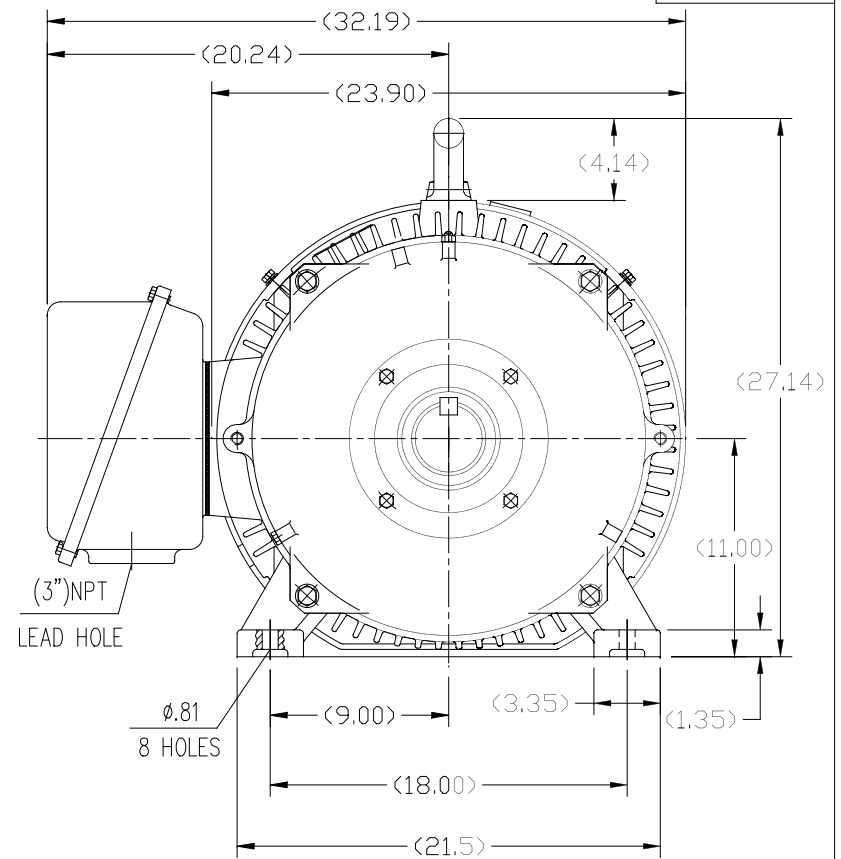
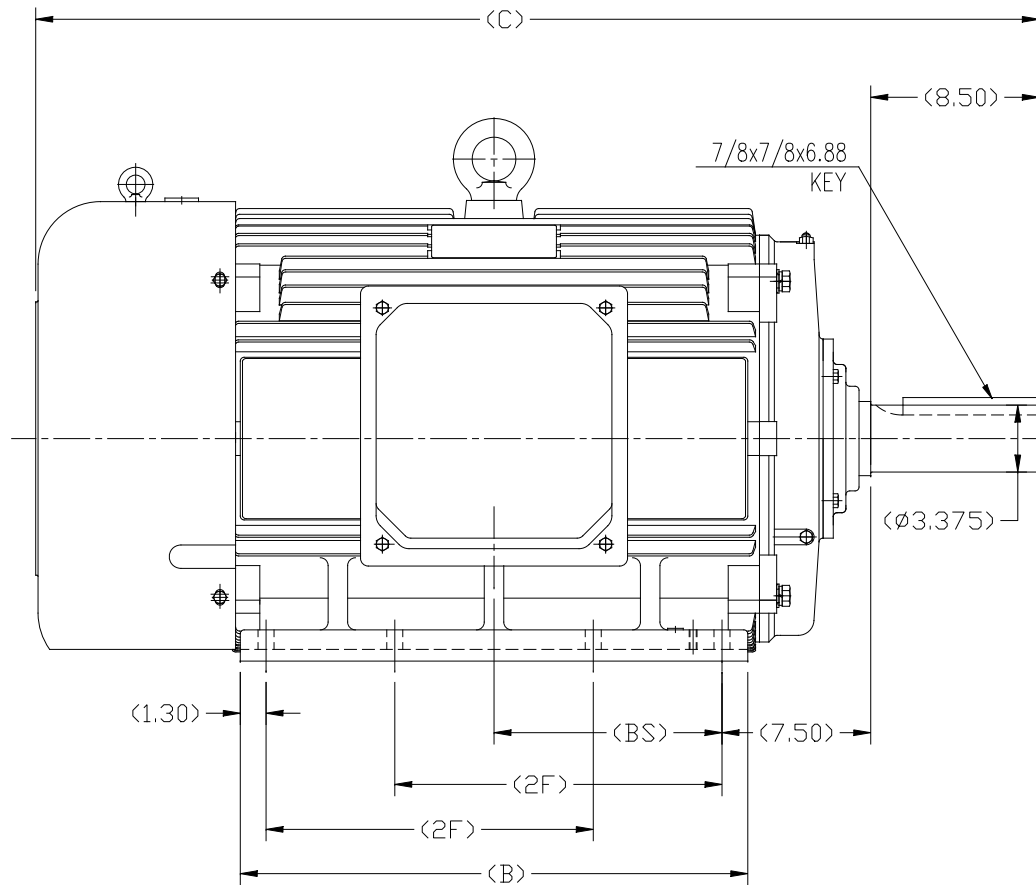


### Nameplate Specifications

Output HP	<b>200 Hp</b>	Output KW	<b>149.0 kW</b>
Frequency	<b>60 Hz</b>	Voltage	<b>460 V</b>
Current	<b>225.0 A</b>	Speed	<b>1790 rpm</b>
Service Factor	<b>1.15</b>	Phase	<b>3</b>
Efficiency	<b>96.2 %</b>	Duty	<b>Continuous</b>
Insulation Class	<b>F</b>	Design Code	<b>C</b>
KVA Code	<b>H</b>	Frame	<b>447T</b>
Enclosure	<b>Totally Enclosed Fan Cooled</b>	Overload Protector	<b>No</b>
Ambient Temperature	<b>40 °C</b>	Drive End Bearing Size	<b>NU319</b>
Opp Drive End Bearing Size	<b>6317</b>	UL	<b>Recognized</b>
CSA	<b>Y</b>	CE	<b>Y</b>
IP Code	<b>55</b>		

### Technical Specifications

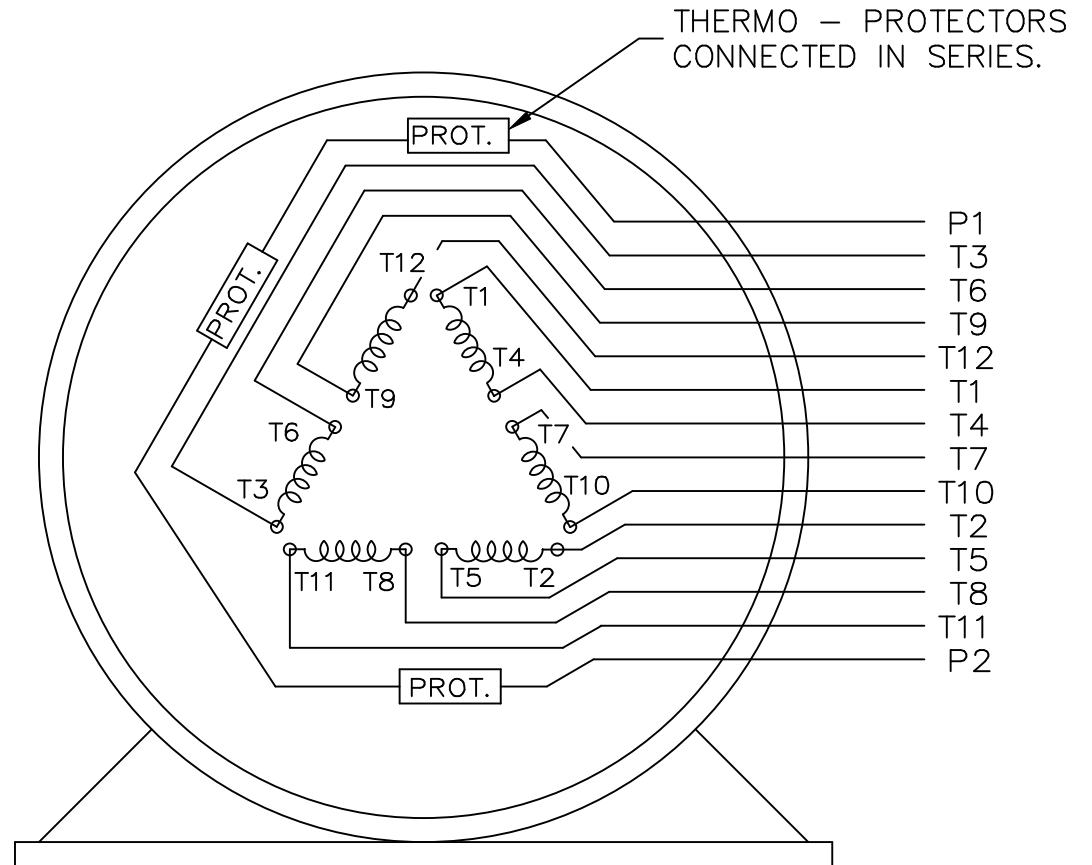
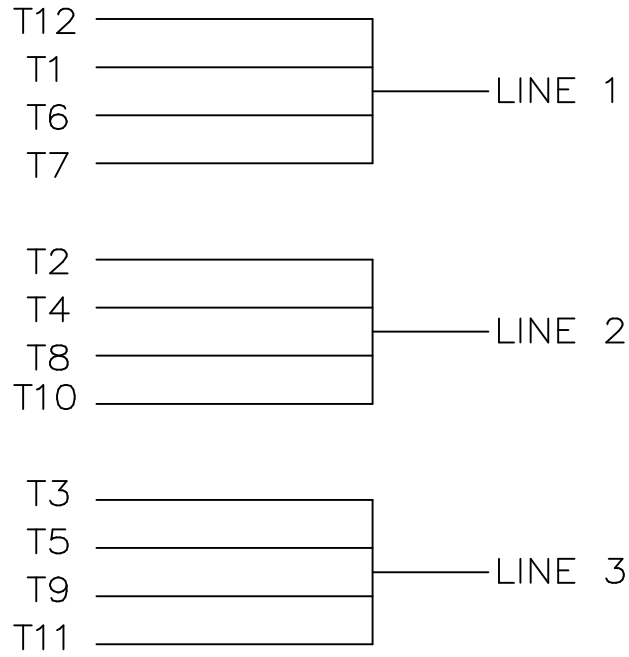
Electrical Type	<b>Squirrel Cage Inverter Rated</b>	Starting Method	<b>Part Wdg Start &amp; Wye Start Delta Run Or Inverter</b>
Poles	<b>4</b>	Rotation	<b>Reversible</b>
Mounting	<b>Rigid base</b>	Motor Orientation	<b>HORIZONTAL</b>
Drive End Bearing	<b>ROLLER</b>	Opp Drive End Bearing	<b>BALL</b>
Frame Material	<b>Cast Iron</b>	Shaft Type	<b>T</b>
Overall Length	<b>50.78 in</b>	Frame Length	<b>31.88 in</b>
Shaft Diameter	<b>3.375 in</b>	Shaft Extension	<b>8.5 in</b>
Assembly/Box Mounting	<b>F1/F2 CAPABLE</b>		
Outline Drawing	<b>SS620287</b>	Connection Diagram	<b>EE7300CB-LE</b>



1. THIS MOTOR IS NOT DUAL DRILLED FOR 444T/445T OR 447T/449T
2. THIS MOTOR IS DRILLED FOR F1/F2 CAPABILITY


444T	50.79	25.60	14.50	11.50
445T	50.79	25.60	16.50	11.50
447T	55.91	30.70	20.00	14.06
449T	55.91	30.70	25.00	---
Frame	C	B	2F	BS

				TOLERANCES UNLESS SPECIFIED		<b>REGAL</b> REGAL-BELOIT CORPORATION		DRAWN ZYH 02-20-2010
				DEC.	INCHES			CHK HZJ 02-20-2010
				.X	±.1			APPD CL 02-20-2010
F	UPDATED DRAWING PER MARK-UP	ECD-0108274	WGJ 7-10-16	EMH	XX	±.03	TITLE	OUTLINE
B	ADDED 'BS' DIM. UPDATED TITLE BLOCK	ECD-0048910	RFH 4-7-14	EH	XXX	±.005	444/445/447/449T FR-TEFC-CAST IRON	
A	2 leads hole change to 1		CL 2010-9-8	CHK	ANG	±.0005	MAT'L.	
NO.	REVISION		BY & DATE	CHK	ANG	±1/2"	FINISH	
THIS DRAWING IN DESIGN AND DETAIL IS OUR PROPERTY AND MUST NOT BE USED EXCEPT IN CONNECTION WITH OUR WORK ALL RIGHTS OF DESIGN AND INVENTION ARE RESERVED THIS IS AN ELECTRONICALLY GENERATED DOCUMENT - DO NOT SCALE THIS PRINT				RFP	ANG		CAD FILE	SS620287
				DIST			SIZE	B
							DRAWING NO.	SS620287
							REV.	F



THERMO - PROTECTORS  
CONNECTED IN SERIES.

VIEW OF TERMINAL END

				TOLERANCES UNLESS SPECIFIED		 ELECTRIC MOTORS GEARMOTORS AND DRIVES	DRAWN KL 02-27-2003			
				DEC.	INCHES		CHK GFH 03-03-2003			
				.X	± -		APPD JES 03-03-2003			
				.XX	± -		SCALE 1=1			
				.XXX	± -		REF			
1	NEW DRAWING	MU45634	KL 03-03-2003	.XXXX	± -	MAT'L.	FMF			
NO.	REVISION		BY & DATE	CHK	ANG	FINISH	PREV			
THIS DRAWING IN DESIGN AND DETAIL IS OUR PROPERTY AND MUST NOT BE USED EXCEPT IN CONNECTION WITH OUR WORK ALL RIGHTS OF DESIGN AND INVENTION ARE RESERVED THIS IS AN ELECTRONICALLY GENERATED DOCUMENT - DO NOT SCALE THIS PRINT				RFP	CAD FILE EE7300CB-LE		SIZE A	DRAWING NO. EE7300CB-LE	PAGE OF	REV. 1
				DIST	WA-LE-SB					

ERROR: undefined  
OFFENDING COMMAND: Pscript\_WinNT\_Co  
STACK :



P.O. BOX 8003  
WAUSAU, WI 54401-8003  
PH. 715-675-3311

DATA VOLTS: 460

CERTIFICATION DATA SHEET

CONN. DIAGRAM: EET7300CB-LE  
OUTLINE: SS620677  
WINDING: CHT44740003

CAT #: 194193.00

R1 1

TYPICAL MOTOR PERFORMANCE DATA

HP	KW	SYNC RPM	FL RPM	FRAME	ENCLOSURE	TYPE	KVA CODE	DESIGN	
200	149	1800	1790	447T	TEFC	TFC	G	BC	
PH	HZ	VOLTS	AMPS	START TYPE	DUTY	INSL	S.F.	AMB	ELEV.
3	60/50	460#380	225&208	PWS & YDRUN OR INV	CONT	F	1.15	40	3300
F.L. EFF	F.L. PF	3/4 LD EFF	3/4 LD PF	96.2	1/2 LD EFF	95.4	GTD EFF	95.8	ELECT. TYPE
96.2	87.5	96.2	85.5	96.2	1/2 LD PF	79.5	95.8	95.8	SO CAGE INVERTED
F.L. TORQUE	LR AMPS @ 460 V	L.R. TORQUE	B.D. TORQUE	F.L. RISE (°C)					
587 LB-FT	1,450	1,300 LB-FT	221%	1,800 LB-FT	307%	65			
PRESSURE @ 3	POWER	ROTOR WK²	MAX LOAD WK²	SAFE STALL TIME	STARTS/HOUR	MOTOR WGT			
75 DBA	84 DBA	88.0 LB-FT²	0 LB-FT²	25 SEC.	0	2750 LB.			

\*\*\* SUPPLEMENTAL INFORMATION \*\*\*

DE BRACKET TYPE	ODE BRACKET TYPE	MOUNT TYPE	MOTOR ORIENTATION	SEVERE DUTY	HAZARDOUS LOCATION	DRIIP COVER	SCREENS	PAINT
STANDARD	STANDARD	RIGID	HORIZONTAL	UM SEVERE	NONE	NO	NONE	BLUE (EPOXY)
BEARINGS	GREASE	SHAFT TYPE	SPECIAL DE	SPECIAL ODE	SHAFT	MATERIAL	FRAME MATERIAL	
ROLLER BALL NU319	SHC-100/POLYREX	T	NONE	NONE	4140 STRESSPROOF (C-214)		CAST IRON	
THERMOSTATS	PROTECTORS	WDG RTD's	BRG RTD's	THERMISTORS	CONTROL	SPACE HEATERS		
TSTATS 160(N/C)	NOT	NONE	NONE	NONE	FALSE	NA		
R1 (ohms/ph)	R2 (ohms/ph)	X1 (ohms/ph)	X2 (ohms/ph)	Xm (ohms/ph)	VIBRATION (in/sec)	FLOAT		
0.011	0.007	0.082	0.18	4.168	0.080	NONE		

* N O T E S *		INVERTER TORQUE: CONSTANT 2:1	
		INV. HP SPEED RANGE: NONE	
		ENCODER: NONE	
		BRAKE: NONE	
		FT-LB: NA	
		VOLTAGE: NONE	
		NONE PPR	

DATE: 1/17/2018	UL: Y-(LEESON UL REC)	HZ:
-----------------	-----------------------	-----

Data Sheet

Date: 1/17/2018

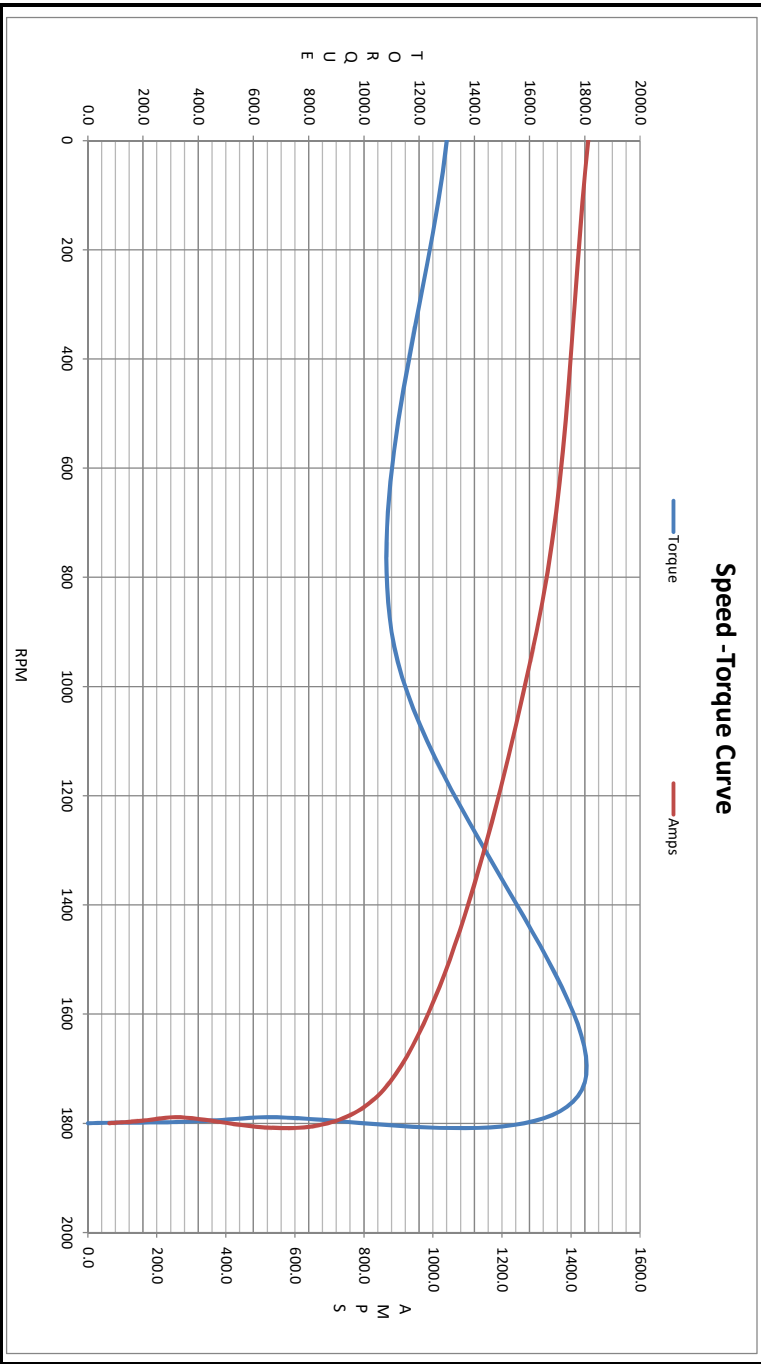
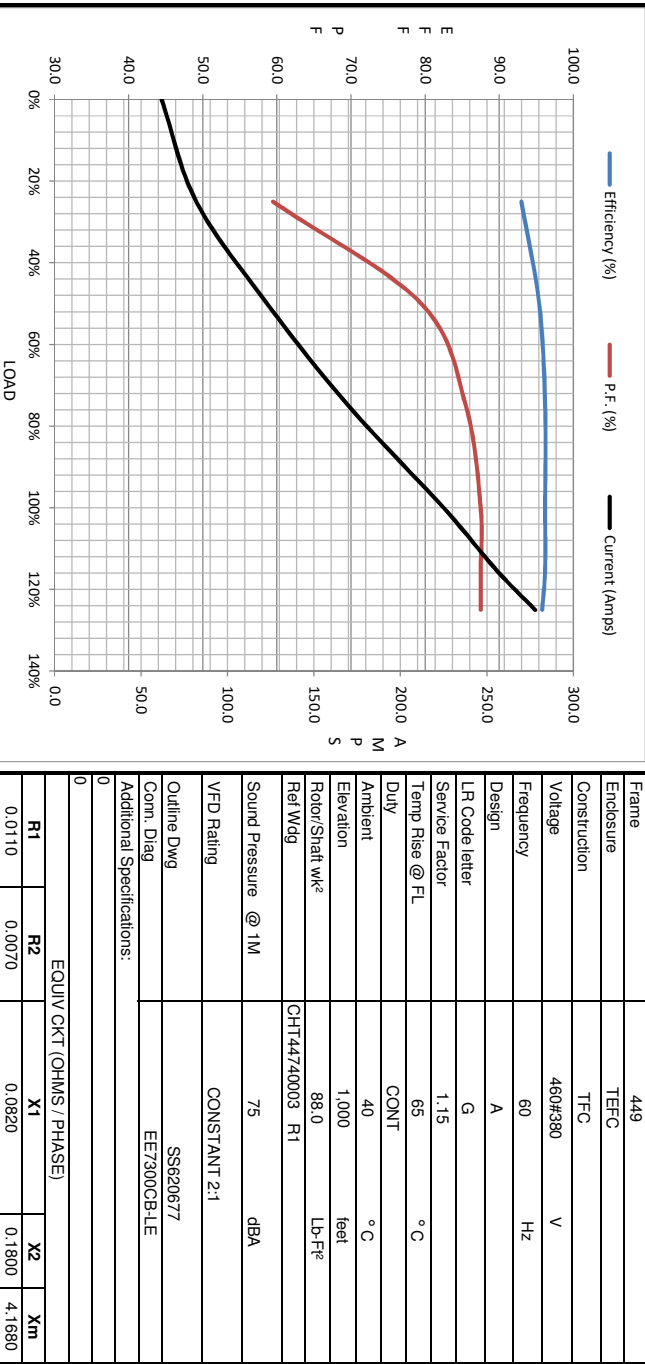
194193.00



Data @ 460 V

Motor Load Data								
Load	0%	25%	50%	75%	100%	115%	125%	LR
Current (Amps)	62.0	82.0	123	170	225	255	278	1,450
Torque (ft-lb)	0.00	146	293	440	587	676	735	1,300
RPM	1800	1796	1794	1792	1790	1,788	1,786	0
Efficiency (%)		93.0	95.4	96.2	96.2	96.2	95.8	
P.F. (%)	4.5	59.5	79.5	85.5	87.5	87.5	87.5	33.0

Motor Speed Data						Information Block																					
Speed (RPM)	LR	Pull-Up	BD	Rated	Idle	HP	Sync. RPM	Frame	Enclosure	Construction	Voltage	Frequency	Design	LR Code letter	Service Factor	Temp Rise @ FL	Duty	Ambient	Elevation	Rotor/Shaft wk <sup>2</sup>	Ref Wdg	Sound Pressure @ 1M	VFD Rating	Outline Dwg	Conn. Diag	Additional Specifications:	



EQUIV CKT (OHMS / PHASE)			
R1	R2	X1	Xm
0.0110	0.0070	0.0820	4.1680